



RomSoft

COMPANY PRESENTATION

WHO WE ARE

Founded in 2001 by Dorin Cristea and Nicu Popescu, who each came with an experience of many years in an Austrian-Romanian joint venture software development company.

Organised as a limited liability, 100% privately owned company.

MAIN ACTIVITIES

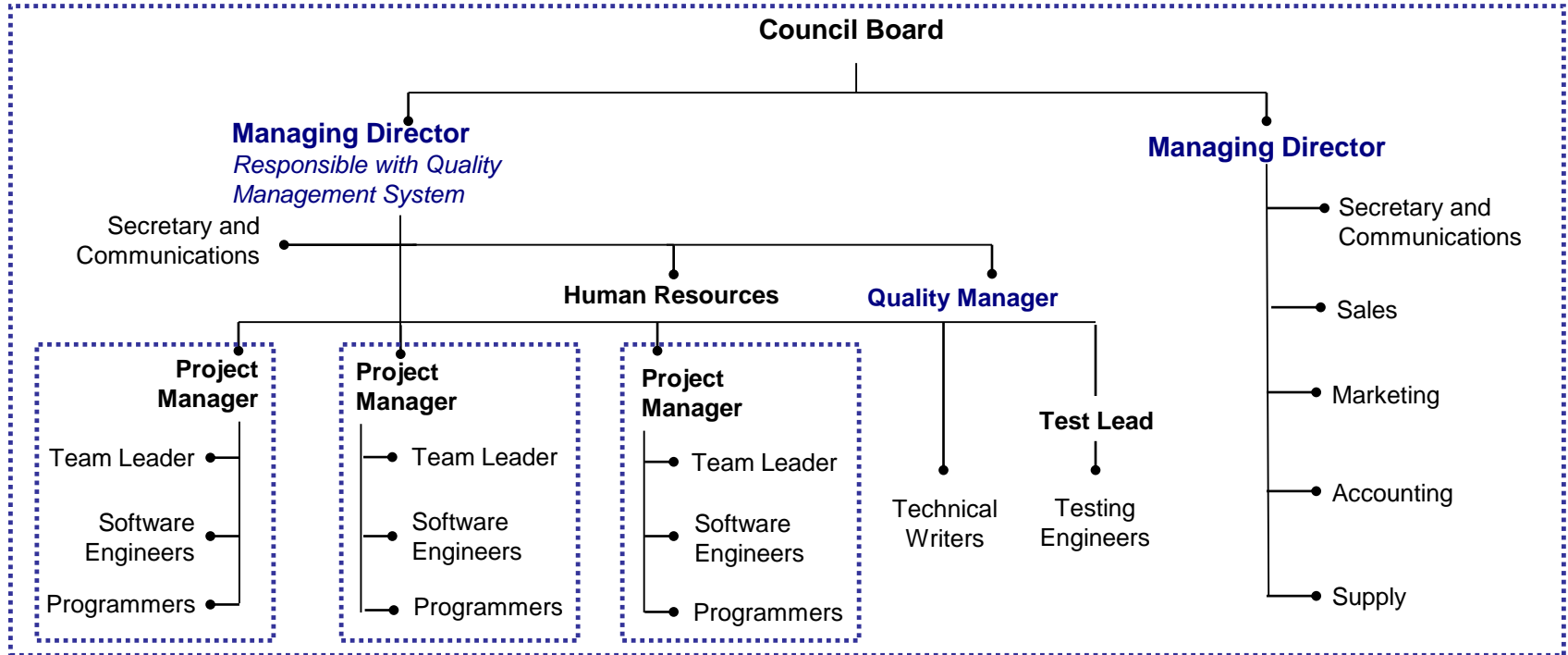
- **Custom application development** for non-IT companies, based on a well defined development process, covering: requirements definition, software architecture, detailed design, coding and testing
- **Outsource and Co-source** for software development companies, especially in the programming phase.
- **IT consultancy** for software development start-ups, as well as for other companies looking to improve their development process.
- **Research and development** activities, as a partner in some EU funded projects, in the E-health, telemedicine and medical devices.

CERTIFICATIONS



- Our Quality Management System is **ISO 9001** certified by [TÜV AUSTRIA CERT GMBH](#).
- QMS was checked and audited against **ISO 13485** and **IEC 62304** (software for medical devices) as part of the Sismex Integrated Quality Model.
- In 2008, RomSoft was granted the "Certification for Scientific Development and Research" issued by [NASR](#) (National Authority for Scientific Research).
- RomSoft is Microsoft Certified Partner in the Microsoft Partner Network, "Gold" level.

ORGANIZATIONAL CHART



PERSONNEL STRUCTURE

- 100 highly qualified employees
- All development team members are computer sciences graduates
- The company organisation is project team oriented
- The testing team is independent (not project assigned)

OUR KEY STRENGTHS

→ Cross-functional teams

- People with varied levels of skills and experience brought together by common goals
- Encouraging the attitude to “get things done”

→ Flexibility

- Assume different roles in different project teams
- Challenging employees by re-orientation inside the company based on evaluations

→ Committed professionals

- People with more than 10 years experience in software development
- Skills in project management, software architecture

OUR KEY STRENGTHS

→ Recruiting pool

- A strong collaboration with universities (Faculty of Automatic Control and Computer Engineering, Technical University "Gh. Asachi" of Iasi, The Faculty of Computer Science, A.I. Cuza University of Iasi) targeting the recruitment of graduated students with special software development skills
- Internship program for dedicated students pursuing software development degrees
- Active participation in human resources events: jobs fairs, events organized by the communities of developers and testers

BUSINESS MODEL

- Outtasking model rather than outsourcing, meaning that RomSoft project teams are part of the customer project teams.
- Depending on the expertise of customer, the development teams can be "grafted" under the control of customer product management, project management or technical management.
- Activities are totally transparent to the customers giving full access and control to the artifacts produced during development process
- Set up integrated development environments for project planning, document management, source code control and problems reporting/tracking.
- Such a model can minimize risks and avoid failures
- Control the project in a more proactive way, rather than a reactive one.

TYPES OF SOFTWARE

- Software for medical laboratories, hospitals.
- Software for automatized medical laboratories.
- Software for medical equipment and devices.
- Internet of Things for: smart house, measuring the quality of the air, etc.
- Software for business processing: document management, sales force, CRM, etc.
- Solutions for the security of data (PaaS – Privacy as a Service) and Blockchain Technology
- Involved in R&D in European Union funded projects.

REFERENCE CLIENTS

- Sysmex Corporation, Japan/Germany; www.sysmex-Europe.com
- Seleon gmbh, Germany; www.seleon.de
- Office Time Line, USA; www.officetimeline.com
- Quantarium, USA; www.quantarium.com
- In R&D by EU funded projects:
 - Imperial College of London
 - Brooks University, Oxford
 - Etc.

Thank you for your attention!

RomSoft

Iasi - 700391, Romania

Bld. Chimiei, Nr. 2 Bis

Tel/Fax: +40 800 002; +40 232 266 831

Web: www.rms.ro; www.romsoft.eu

E-mail: dorin.cristea@rms.ro

